

BELLS AND BUZZERS - WIRED

| Model No. | Description | Order Code |
|-----------|---------------------|------------|
| D182 | Minibuzzer 8VAC | CHM0011 |
| D792 | Underdome Bell 8VAC | CHM0013 |
| D902 | Bell-in-One 3VDC | CHM0014 |

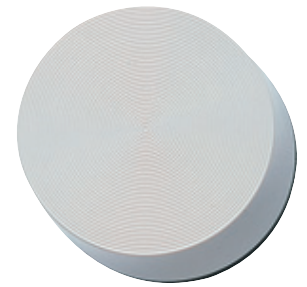
- Bells and Buzzers will sound continuously for as long as the button is pushed.
- These Bells and Buzzers can not be wired in parallel with a chime.
- Bell-in-one must be run off batteries (2 x D).
- Minibuzzer and Underdome bell can only be transformer operated (CHM0024).

TECHNICAL DATA

| Bells and Buzzers | Voltage | Signal 1 | Batteries | Transformer | Sound Level dB@1m |
|--------------------|---------|----------|---------------------------|--------------------|-------------------|
| D182 - Minibuzzer | 8VAC | Buzzer | n/a | CHM0024 or CHM0025 | 90 |
| D792 - Underdome | 8VAC | Bell | n/a | CHM0024 or CHM0025 | 85 |
| D902 - Bell-in-one | 3VDC | Bell | 2 x (D) (not included) | n/a | 80 |

| Wiring Connections | Battery Operation | Transformer Operation | |
|--------------------|-------------------|-----------------------|--------|
| | Push 1 | Transformer | Push 1 |
| D902 | 0 + 1 | | |
| D792, D182 | | * | * |

* Terminals are unmarked, push should be wired in series with bell and transformer. The two incoming wires are then connected to either terminal.



D182 Minibuzzer



D792 Underdome



D902 Bell-in-one