

heat transfer specialists

HeatTrans 



Transfer excess heat to other rooms in the home

HEAT TRANSFER SYSTEMS
www.heattrans.co.nz

“creating healthier homes”

How does it work?

HEAT TRANS systems are designed to utilise your excess heat by transferring it from your lounge or heat source room, and distributing it to other rooms in your home.

If your lounge is warm & comfortable but the rest of the house remains cold, then this is the system you need! By transferring the excess heat you can efficiently use that warmth to reduce the chill in bedrooms, creating a drier, more comfortable environment throughout the home.

The only system on the market to include acoustic insulated ducting, Heat Trans achieves maximum heat retention with minimum air transfer noise.

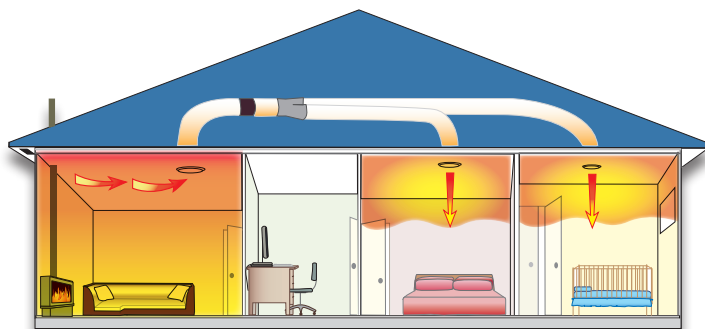
5
YEAR
WARRANTY



1

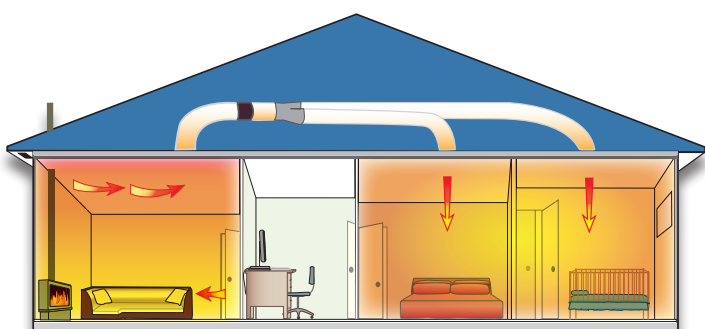
The 3 step process

Excess heat from your heat source rises to ceiling level where it is trapped. This excess heat can reach temperatures of 30-35°C.



2

This excess heat is drawn up using a high quality fan and its warmth is effectively transferred to other rooms via the insulated ducting.



3

Air movement occurs from the bedrooms back to the lounge creating re-circulation of warmer, drier air throughout the home.

This can also make your home healthier by helping to reduce mould and mildew.



Heat Trans features

Automated control

Automated touch screen technology gives effortless control of your Heat Trans system, with a clear large screen displaying the 'heat source' room temperature. The system automatically adjusts the fan speed to achieve your preferred temperature by transferring the excess heat to other rooms in your home.

With the Timer function, set the system to turn off when you choose and use the HOT/COOL modes for year round use, if the optional extra Summer Feature has been installed.



Superior fans

The high quality multi-speed fan has been specifically selected to deliver optimum airflow and pressure levels, that cost as little as a light bulb (between 38W and 120W) to run.



Whisper quiet air transfer

The unique acoustic insulated duct reduces air transfer noise to a 'whisper quiet' level. Better temperature heat retention is achieved also, during air transfer.



Adjustable diffusers

Balance the airflow into each room by turning the centre section of the diffuser to allow more or less air into each room. Simply twist to close the diffuser when the room is not in use.

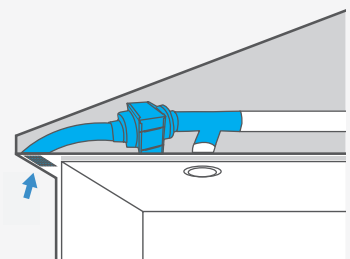


Optional upgrades

Summer feature

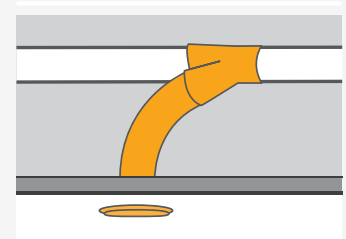
The Summer-Vent Extension Kit draws cool air from an inlet grille in the soffit through a high efficiency F7 filter and circulates the fresher air around the home, via the existing Heat Trans ducting/outlets.

Note: When Summer Feature is active, a damper closes the lounge/heat source room inlet.



Extension kit

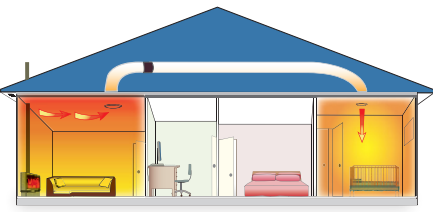
The Pro-Series Additional Outlet Kit is designed to extend your standard three room Heat Trans system so you can distribute warm air to four rooms. By adding additional outlet/s to your system you are able to divide the available heated air amongst more rooms.



Heat Trans systems

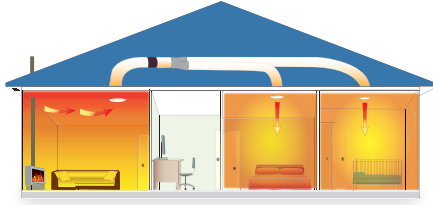
One Room Kit: FAN0325

- 1 x Automated Touch Screen Controller
- 1 x 150mm High Performance Axial Flow Fan
- 1 x 3 Metres - 150mm Acoustic Insulated Duct
- 1 x 3 Metres - 150mm Insulated Duct
- 1 x Circular Inlet Grille
- 1 x Adjustable Circular Design Outlet Diffuser
- 2 x 45mm x 5 Metre Duct Tape



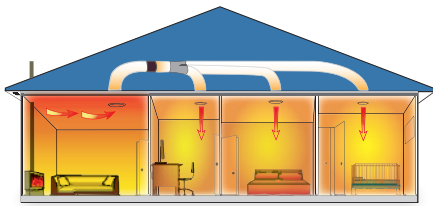
Two Room Kit: FAN0337

- 1 x Automated Touch Screen Controller
- 1 x 150mm Multi-Speed High Performance Fan
- 2 x 3 Metres - 150mm Acoustic Insulated Duct
- 2 x 3 Metres - 150mm Insulated Duct
- 1 x Y Branch
- 1 x Circular Inlet Grille
- 2 x Adjustable Circular Design Outlet Diffusers
- 3 x 45mm x 5 Metre Duct Tape



Three Room Kit: FAN0338

- 1 x Automated Touch Screen Controller
- 1 x 200mm Multi-Speed High Performance Fan
- 3 x 3 Metres - 150mm Acoustic Insulated Duct
- 2 x 3 Metres - 200mm Insulated Duct
- 1 x Double Branch Take-Off (3 Way Splitter)
- 1 x Circular Inlet Grille
- 3 x Adjustable Circular Design Outlet Diffusers
- 1 x 48mm x 30 Metre Duct Tape



All Heat Trans systems can be extended as follows:

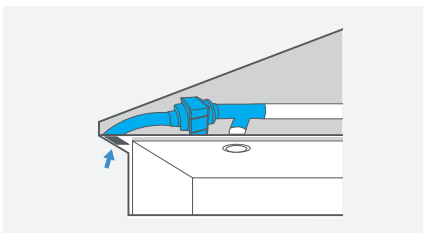
- 1 Room Kit - 6 metres supplied (can be extended to 12 metres).
- 2 Room Kit - 12 metres supplied (any one duct length can be extended up to 18 metres from inlet to outlet).
- 3 Room Kit - 15 metres supplied (any one duct length can be extended up to 21 metres from inlet to outlet).

Thru Wall Kit: FAN0005

To transfer heat from your lounge directly to an adjacent room, there is the compact through wall fan solution.

For more information on Heat Trans visit www.heattrans.co.nz

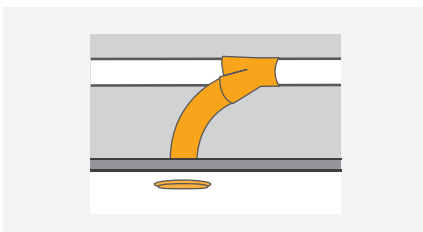
Optional extras



Summer Vent Extension Kit: DCT1481

Bring in cooler air during warmer months

- 1 x Branch Take Off (Splitter) including Motorised Dampers
- 1 x 200mm F7 Filter Box
- 1 x 3 Metres - 200mm Insulated Duct
- 1 x 200mm Fixed Grille
- 2 x 48mm x 5 Metre Duct Tape
- 2 x 200/150 reducers (only required if adding to a one or two room Heat Trans system)



Pro Series Additional Outlet Kit: DCT2101

Extend a 3 room kit into a four room system

- 1 x Y Branch (Splitter)
- 1 x 3 Metres - 150mm Acoustic Insulated Duct
- 1 x Adjustable Circular Design Outlet Diffuser
- 2 x 48mm x 5 Metre Duct Tape



HeatTrans 
Heat Transfer Specialists

Distributed by Simx Limited. PO Box 14347, Panmure, Auckland 1741, New Zealand

p: (09) 259 1660 e: enquiry@heattrans.co.nz w: www.heattrans.co.nz

We reserve the right to alter specifications without notice.

Dealer details: