

## CAT6 UTP PATCH LEADS - 250MHZ

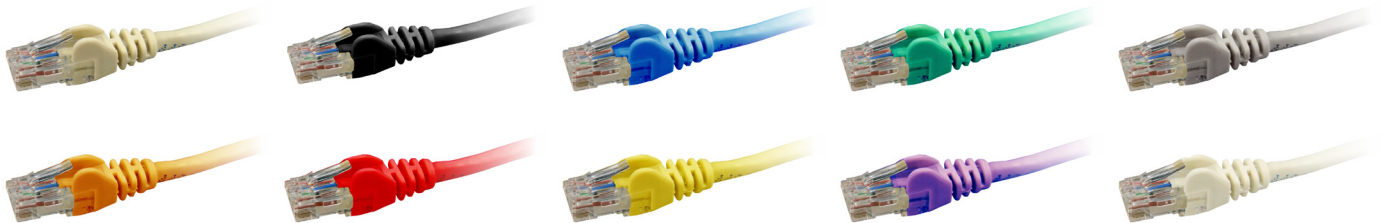
The Cat6 UTP patch leads conform to the ANSI/TIA-568.2 specification. Patch leads are wired to the T568A pin-out specification. They are individually channel tested and are made with tangle free slimline injection molded boots in various colours and lengths.

### FEATURES:

- Produced by an ISO9001 and ISO14001 certified manufacturer
- 100% tested, performance verified by 3P, UL Listed
- Available in 10 colours
- Covered by lifetime warranty
- Range: -20~60°C



### T568A Cabling Pinout Specifications



### PRODUCT CODES

LENGTH	BEIGE	BLACK	BLUE	GREEN	GREY	ORANGE	RED	YELLOW	PURPLE	WHITE
0.3M	PL-C6A-PP	PLK-C6A-PP	PLE-C6A-PP	PLG-C6A-PP	PLGY-C6A-PP	PLO-C6A-PP	PLR-C6A-PP	PLY-C6A-PP	PLP-C6A-PP	PLW-C6A-PP
0.5M	PL-C6A-0	PLK-C6A-0	PLE-C6A-0	PLG-C6A-0	PLGY-C6A-0	PLO-C6A-0	PLR-C6A-0	PLY-C6A-0	PLP-C6A-0	PLW-C6A-0
0.75M	PL-C6A-TQ	PLK-C6A-TQ	PLE-C6A-TQ	PLG-C6A-TQ	PLGY-C6A-TQ	PLO-C6A-TQ	PLR-C6A-TQ	PLY-C6A-TQ	PLP-C6A-TQ	PLW-C6A-TQ
1M	PL-C6A-1	PLK-C6A-1	PLE-C6A-1	PLG-C6A-1	PLGY-C6A-1	PLO-C6A-1	PLR-C6A-1	PLY-C6A-1	PLP-C6A-1	PLW-C6A-1
1.5M	PL-C6A-1H	PLK-C6A-1H	PLE-C6A-1H	PLG-C6A-1H	PLGY-C6A-1H	PLO-C6A-1H	PLR-C6A-1H	PLY-C6A-1H	PLP-C6A-1H	PLW-C6A-1H
2M	PL-C6A-2	PLK-C6A-2	PLE-C6A-2	PLG-C6A-2	PLGY-C6A-2	PLO-C6A-2	PLR-C6A-2	PLY-C6A-2	PLP-C6A-2	PLW-C6A-2
3M	PL-C6A-3	PLK-C6A-3	PLE-C6A-3	PLG-C6A-3	PLGY-C6A-3	PLO-C6A-3	PLR-C6A-3	PLY-C6A-3	PLP-C6A-3	PLW-C6A-3
4M	PL-C6A-4	PLK-C6A-4	PLE-C6A-4							
5M	PL-C6A-5	PLK-C6A-5	PLE-C6A-5	PLG-C6A-5	PLGY-C6A-5	PLO-C6A-5	PLR-C6A-5	PLY-C6A-5	PLP-C6A-5	PLW-C6A-5
7.5M	PL-C6A-7H	PLK-C6A-7H	PLE-C6A-7H	PLG-C6A-7H	PLGY-C6A-7H	PLO-C6A-7H	PLR-C6A-7H	PLY-C6A-7H	PLP-C6A-7H	PLW-C6A-7H
10M	PL-C6A-10	PLK-C6A-10	PLE-C6A-10	PLG-C6A-10	PLGY-C6A-10	PLO-C6A-10	PLR-C6A-10	PLY-C6A-10	PLP-C6A-10	PLW-C6A-10
12.5M	PL-C6A-12H	PLK-C6A-12H	PLE-C6A-12H							
15M	PL-C6A-15	PLK-C6A-15	PLE-C6A-15							PLW-C6A-15
20M	PL-C6A-20	PLK-C6A-20	PLE-C6A-20							PLW-C6A-20
25M	PL-C6A-25		PLE-C6A-25							
30M	PL-C6A-30		PLE-C6A-30							
35M	PL-C6A-35		PLE-C6A-35							
40M	PL-C6A-40		PLE-C6A-40							
50M	PL-C6A-50		PLE-C6A-50							