

Cat6A Unshielded Keystone Patch Panel

MODEL CODE	PORTS
NEW PP-C6AUTP-24	24 Port

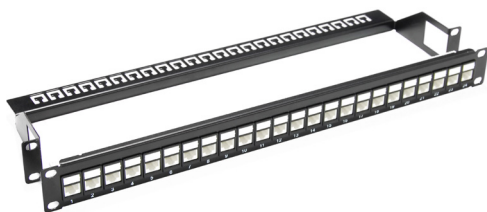
Unloaded 19" unshielded keystone patch panel. Populated with Cat6A UTP keystone RJ45 jacks (FP-C6AUTP-01)

FEATURES

- Performance conforms to ANSI/TIA-568-C.2, IEEE 802.3an for 10GBASE-T and ISO 11801, EN 50173-1 Class EA specifications
- Improved RJ45 contact provides superior performance
- Terminate with 110 or krone tools
- IDC connector can accept 23~26AWG solid and stranded cables
- Supports termination wiring (T568A/B)
- RoHS compliant

APPROVALS

- ETL certified TIA/EIA-568-B.2-10 Category 6A unshielded 2-Connector permanent link (bundled in a 6 around 1 configuration) testing performance requirements



Cat6A Keystone Certified RJ45 Jacks

MODEL CODE	TYPE	COLOUR
NEW FP-C6AUTP-01	180°	White

FEATURES

- Performance conforms to ANSI/TIA-568-C.2, IEEE 802.3an for 10GBASE-T and ISO 11801, EN 50173-1 Class EA specifications
- Improved RJ45 contact provides superior performance
- Terminate with 110 or krone tools
- IDC connector can accept 23~26AWG solid and stranded cables
- RoHS compliant

APPROVALS

- ETL certified TIA/EIA-568-B.2-10 Category 6A unshielded 2-Connector permanent link (bundled in a 6 around 1 configuration) testing performance requirements

Rapid termination tool available. Model: CT-RAPT180



Cat6 Certified Patch Panels

MODEL CODE	TYPE	PORTS
PP-C6-16	Dual Type IDC	16
PP-C6-24	Dual Type IDC	24
PP-C6-24L	Dual Type IDC w/plastic labelling kit	24
PP-C6-48	Dual Type IDC	48

FEATURES

- Category 6 patch panel exceeds TIA/EIA-568-B.2-1 Category 6 & ISO 11801 2nd edition Class E & EN50173-1 standards
- Backward compatible to Category 5e, 5 & 3
- Supports termination wiring (T568A/B)
- Colour Black

SPECIFICATIONS

- Material: 1.6mm steel plate
- Colour: black lacquer
- Installation: 19-inch frame/cabinet
- Jack wiring: 8p 100-micron inch Gold Plated over 100-micron inch nickel
- Plug insertion life: 750 cycle min
- IDC insertion life: 200 cycle min
- Conductor: 22-26AWG

APPROVALS

- UL, ETL & 3P certified



Cat6 Keystone Certified RJ45 Jacks

MODEL CODE	TYPE	COLOUR
NEW FP-C6-007SH	180° Shuttered	White
FP-C6-007	180°	White
FP-C6-008	180°	Black
FP-C6-002	90°	White

FEATURES

- Performance conforms to TIA/EIA-568-B.2-1, ISO/IEC 11801 & EN 50173-1 Category 6 specifications
- Dual Type IDC connector can accept 22-26 AWG solid & stranded cables
- Terminate using 110 or Krone type punch down tools

APPROVALS

- ETL & 3P Certified TIA/EIA-568-B.2-1 Category 6 Channel testing performance requirements
- UL/cUL Listed

Rapid termination tool available. Model: CT-RAPT180

