

Net Prowler™ Tester TNP700

The Net Prowler comes with a handy hanging pouch for easy portability and organization. Included are the following accessories to help you get started:

Kit Includes

- Net Prowler™ Main Unit
- #1-5 Coax ID and Test Remote Set
- #1-5 Data ID-only Remote Set
- F Female to F Female Adapter F81
- Network/Tel Test and ID Smart Remote #1
- No-Fault Cables – Qty 2
- Micro USB Cable
- Hanging Pouch
- Quick Start Guide
- User Manual (Online)
- Warranty Activation Card
- 6x Alkaline AA batteries



**Net Prowler
PRO Test Kit
TNP850K1**

Kit Includes

- Net Prowler™ Main Unit
- #1-8 Network/Tel Test and ID Smart Remotes
- #1-8 ID and Test Coax Remote Set
- #1-12 ID-only Data Remote Set
- Micro USB Cable
- No-Fault Cable – (Qty 2)
- RJ45 Port Saver
- RJ45 Alligator 12 Inch
- F Female to F Female Adapter F81 – (Qty 2)
- BNC Female-to-F Female Adapter
- BNC Female-to-F Male Adapter
- Durable Plastic Case
- Quick Start Guide
- Warranty Activation Card

Specifications

Measurement Technology	Time Domain Reflectometry (TDR)
Cable Measurements	Cable Testing and ID: up to 1000 ft (305 m) Split Pair Detection: 3 ft (1 m) to 1,000 ft (305 m) Length Measurement: 0 to 1,500 ft (457 m), ± (5%+1 ft) Supports 8 continuity and ID number remotes (RJ45) Supports 20 RJ45 and 20 F connector ID only remotes
Power over Ethernet	Tests for IEEE 802.3af and IEEE 802.3at (PoE Plus) compliant PoE Tests for classes and loads cable up to 25.5 watts (at class 4) Identifies Mode A or B (pairs with PoE)
Active Ethernet	Indicates advertised speeds of 10/100/1000base-T half or full duplex. Can link to network at 10/100base-T
Maximum Voltage	RJ Jack: 66 VDC or 55 VAC F Connector: 50 VDC or VAC <i>Refers to the max voltage that can be applied to any 2 connector pins without damaging the tester</i>
Save Test Results	Stores up to 250 cable or network tests with user defined names
Tone Generation	Tone Frequencies: 730 Hz and 1440 Hz
Languages	English, French, Spanish
Battery Life	For 6 x AA, 9VDC, 2,200 mA-hr (typical) alkaline battery: Operating – 20 hours typically Standby – 1.5 years typically (200uA max standby current) Batteries are included
Altitude	10,000 ft (3048 m) operating
Temperature	Operating: 32 to 122°F (0 to 50°C) Storage: -22 to +140°F (-30 to 60°C)
Humidity	10 to 90% non-condensing
Enclosure	High-strength PC/ABS plastic with V0 rating with boot Withstands 4 foot drops onto concrete
Size	1.85"H x 3.6"W x 6.8"L (4.7 x 9.15 x 17.3 cm)
Weight	With batteries: 1 lb 2 oz (510 g)
Safety Compliances	CE
Warranty	1 Year

California, USA

Phone: 805.384.2777/800.749.5783 • Fax: 800.749.5784

www.platinumtools.com

We Make Connections EZ!

2015 Platinum Tools, All rights reserved
PF-TNP700 NC Rev B 0215

Identify, Monitor & Test LAN Issues

- Displays IP Address
- Troubleshoot Network Issues
- Verify Port Settings
- Test VDV Cables

PLATINUM TOOLS[®]



**Tests 10/100/1000
Base-T, IPV4/IPV6, VLAN,
DHCP and more**

Net Prowler™ combines network testing (physical layer and link), cable verification, cable troubleshooting and PoE voltage testing in a handheld tester with a full-color display; all with the capability of saving and printing tests results from a personal computer.

Network Testing

- Ping both IPV4 and IPV6 addresses
- Test TCP/UDP throughput
- Detects and reports advertised link speed and link duplex capability
- Tests the presence of VLANs
- CDP/LLDP/NDP and VLAN identification provides network configuration information
- Ping specific URL to verify WAN connectivity
- Blinks link light to identify location on a hub/switch/router port
- Display network devices & associated IP Addresses

Cable Verification & Troubleshooting

The Net Prowler™ provides full cable testing on any category network, coax, or telephone cable. It will display wire map, numbered ID remotes, and any faults, including shorts, opens, miswires, split pairs, and reverses. The full-featured Net Prowler™ measures cable length (using TDR technology) and generates tone levels for signal tracing and cable identification on all pairs, a selected pair or a selected pin.

PoE Voltage Testing

The Net Prowler™ enables quick identification of a network drops link capability and current link status. Net Prowler™ also Tests the presence of PoE on the network drop and what class of PoE per IEEE 802.3 af/at with load test for voltage drop. These network tests can also be saved for record keeping and printing.

Part No.	Description
TNP700	Net Prowler™ Tester
TNP850K1	Net Prowler™ PRO Test Kit



SEE DEMO AND
USER MANUAL

California, USA

Phone: 805.384.2777/800.749.5783 • Fax: 800.749.5784

www.platinumtools.com

We Make Connections EZ!

2015 Platinum Tools, All rights reserved

P/N TNP850K1

PLATINUM TOOLS®

Net Prowler™ PRO Test Kit

Identify, Monitor & Test LAN Issues

Tests 10/100/1000 Base-T, IPV4/IPV6, VLAN, DHCP and more



- Display and PING IP addresses •
- Troubleshoot Network Issues •
- Verify Port Settings •
- Test VDV Cables •



Net Prowler™ Tester

Troubleshoot Networks

- Supports IPV4 and IPV6 protocols
- Verifies DHCP connectivity and DNS
- Pings IPV4, IPV6, and URL addresses
- CDP, LLDP, NDP, and VLAN detection
- TCP/UDP Throughput Test

Verify Port Settings

- Tests presence of PoE and class of PoE per IEEE 802.3af/at with load test for voltage drop
- Tests and reports current link speed and link capabilities for active Ethernet drops up to 1 Gbps
- Link light to identify location on a hub/switch/router port

Test VDV Cables

- Tests CAT3/5e/6/6a Ethernet cable configuration and verifies connectivity while conducting tests for opens, shorts, miswires, split pairs, and reverses
- Supports up to 8 testing and ID remotes for network & telephone cables
- Supports up to 20 network and coax ID-only mapping remotes
- Ability to define Network test name, cable name, save and print all results (cable testing and network testing)

ID and Test Coax Remote Set

- ID/MAP 8 video (coax) cables at once. Numbered custom F remotes 1 thru 8 for easy identification

Cables

- **Micro USB Cable:** Connects Net Prowler to computer for exporting test results
- **No-Fault Cable:** 7.5" Special RJ12 to RJ12 The No-Fault Cable uses no-fault RJ12 connectors on both ends to assure no damage to the RJ45 jacks. It is the ideal patch cable to use when mapping or shooting tone
- **RJ45 Port Saver:** Extend the life of your tester by using the RJ45 Port Saver as your sacrificial cable. This eliminates the wear and tear from constantly plugging in and out of the tester port
- **Tone Cable RJ45/Alligator:** Use when shooting tone via the data port. Cable conductors are terminated on contact #1 and #2, so program your Cable Prowler to shoot tone on pair 1 and 2

Adapters

- F Female-to-F Female – (Qty 2)
- BNC Female-to-F Female – (Qty 1)
- BNC Female-to-F Male – (Qty 1)

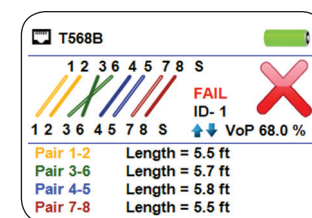
ID-only Data Remote Set

- ID/MAP 12 data (twisted pair) cables or data ports/jacks at once. Numbered custom RJ45 remotes 1 thru 12 for easy identification

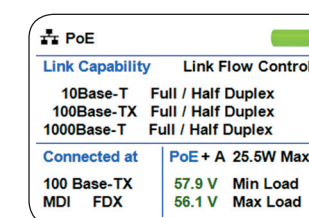
#1-8 Network/Tel Test and ID Smart Remotes

- Test & Map/ID voice/data simultaneously
- Cat6, Cat6A, Cat5e, Cat5, Cat4 and Cat3 cables
- Shielded and unshielded cables

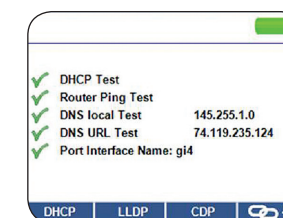
Test Displays



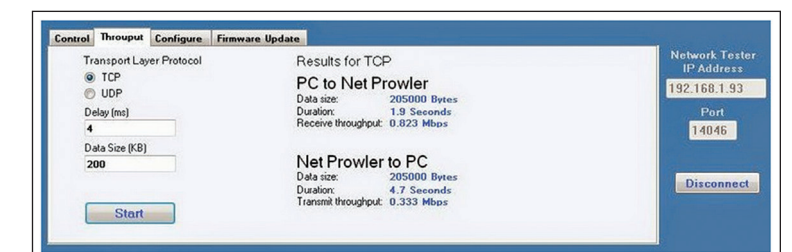
Cable Verification



Link Settings & PoE Voltage Detection



Port Discovery Mode



TCP/UDP Throughput Testing

We Make Connections EZ!

www.platinumtools.com