

TEMPERATURE CONTROLS

REMOTE / DIRECT SENSING

Type LWS, XWS

SAGINOMIYA

GENERAL DESCRIPTION

- Most suitable model can be selected from the variations of wide temperature range with either adjustable or fixed differential. Narrow differential is further advantageous.
- Sensing elements are air sensed and liquid sensed type depending on control media. Also, sensing element can be selected from remote or direct type depending on application.
- Single pole double throw contacts allows use for either heating or cooling application, with large contact rating as well.
- Adjusting mechanism is driver adjusting type as standard on delivery, but a knob assembly and a concealed plate are also supplied as standard accessories.



Type LWS, XWS

TYPE NUMBER SELECTION (SPECIFICATIONS)

Type LWS—Set high type with standard remote sensing element.

Unit: °C

Catalog No.						Temp. Adjusting Range		Differential		Bulb Size (mm)	Ambient Temp.	Limit of Bulb Temp.	Wt. (kg)
Type	Designation					Min.	Max.	Min.	Max.				
	Contact	Model	Differential	Rating	Capillary Length								
LWS-	C1	030	A (Variable)	G	Standard L1(L=1m) Option L2(L=2m) L3(L=3m) L5(L=5m)	-35	30	2	7	φ 9.5×100	-20 to 70	60	0.45
		060				-5	60					90	
		090				25	90					120	
		120				40	120					150	
		160				95	160					185	
		200				135	200					230	
		240	175	240	265								
		030	F (Fixed)	R	Standard L1(L=1m) Option L2(L=2m) L3(L=3m) L5(L=5m)	-35	30	2.5	8	φ 9.5×70		60	
		060				-5	60					90	
		090				25	90					120	
		120				40	120					150	
		160				95	160					185	
		200				135	200					230	
		240				175	240					265	
240						Standard L1(L=1m) Option L2(L=2m)	-35				30	2.5 (Fixed)	φ 9.5×70
060	-5	60	90										
090	25	90	120										
120	40	120	150										
160	95	160	185										
200	135	200	230										
240	175	240	265										

- Manual Reset Models of LWS-C1030F and LWS-C1060F for low limit application are available upon request.
- Knob assembly and control plate are supplied as standard accessories.

Type XWS—Set low type with standard remote sensing element.

Unit: °C

Catalog Number						Temp. Adjusting Range (°C)		Differential (°C)		Bulb Size (mm)	Ambient Temp.	Limit of Bulb Temp.	Wt. (kg)
Type	Designation					Min.	Max.	Min.	Max.				
	Contact	Model	Diff.	Rating	Capillary Length								
XWS-	C1	030	A	G	L2 Option L3, L5	-35	30	2	7	φ9.5 × 100	-20 to 70	60	0.45
		060		R		-5	60					90	

TEMPERATURE CONTROLS

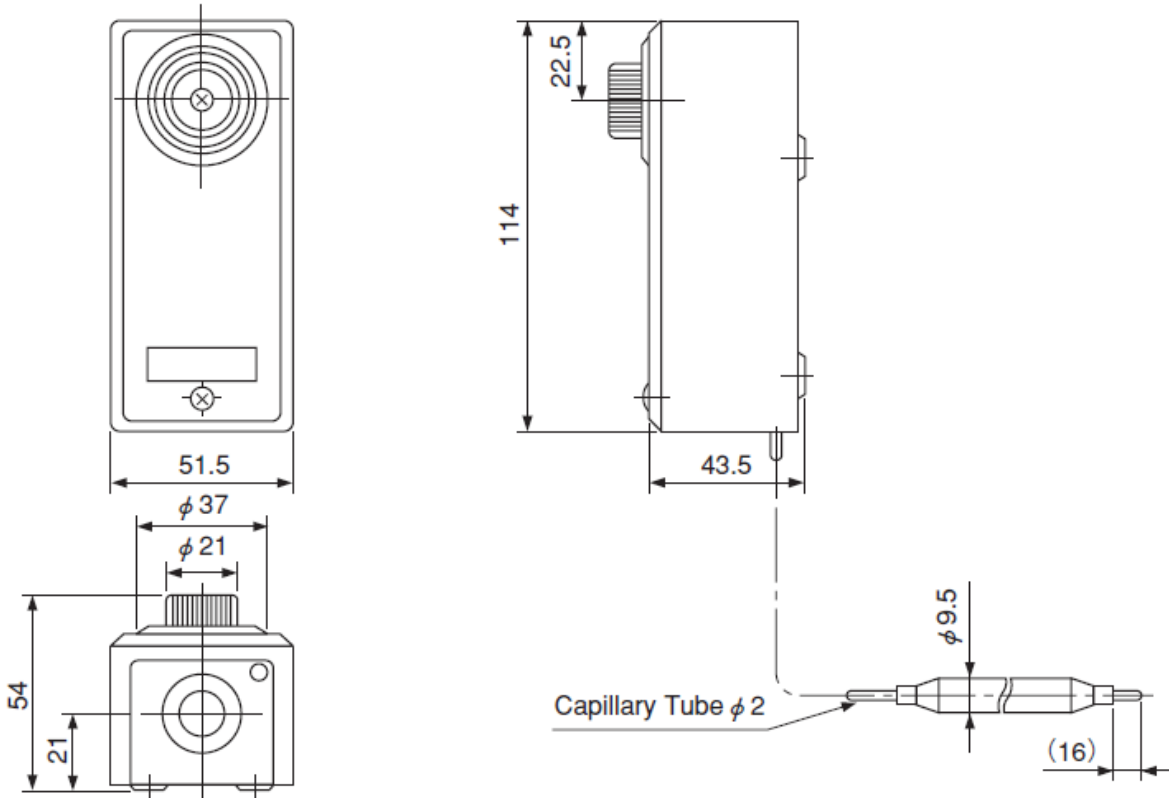
REMOTE / DIRECT SENSING

Type LWS, XWS



DIMENSIONS

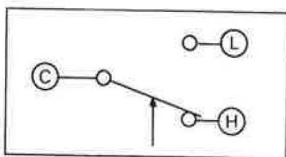
Type LWS



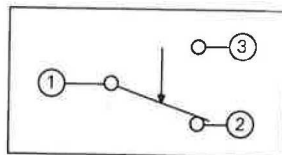
ELECTRICAL RATINGS

Electrical Rating Code	Rated Voltage (V)		Power Factor (cos ϕ)	125V. AC	250V. AC
	Rated Amps. (A)				
G	Non-Inductive Current		1.0	0.5 to 16	0.5 to 8
	Inductive Current	Full Load	0.75		
		Locked Rotor	0.45	96	48
R	Non-Inductive Current		1.0	0.05 to 8.5	0.05 to 4.5
	Inductive Current	Full Load	0.75		
		Locked Rotor	0.45	51	27

5. CONTACT STYLE



Type LWS, RWS, EWS



Type XWS

Models "set high"

The dial indicates the high switch point (C-L close, C-H open). The low switch point (C-L open, C-H close) is obtained by deducting the differential from the high switch point.

Models "set low"

The dial indicates the low switch point (1-2 open, 1-3 close). The high switch point (1-2 close, 1-3 open) is obtained by adding the differential to the low switch point.

Arrow marking indicates a direction of switch action on temperature increase.