

Connected Dimmer
BLE default mode

41EPBDWCLM-VV
PDL354PDBMTW-VV

Iconic® Connected Module

1 Follow the installation instructions

To change default device settings:

2 Download the Wiser™ by SE App

3 Connect the Iconic device

4 Configure the Iconic device

Works with



Customer care

Warranty information

We warrant this product for 2 years. See **Warranty** links below.

Schneider Electric (Australia) Pty Ltd
33-37 Port Wakefield Road, Gepps Cross SA 5094

Customer Care: 13 73 28

Email: customercare.au@se.com

Warranty:

<https://www.se.com/au/en/about-us/legal/terms-and-conditions.jsp>

www.se.com

Schneider Electric (NZ) Ltd

Building 6, 60 Highbrook Drive, East Tamaki, Auckland 2013

Customer Care: 0800 652 999

Email: sales@nz.schneider-electric.com

Warranty:

<https://www.se.com/nz/en/about-us/legal/terms-and-conditions.jsp>

www.se.com

For your safety

⚠ DANGER

HAZARD OF ELECTRIC SHOCK, EXPLOSION, OR ARC FLASH

- It is illegal for persons other than an appropriately licensed electrical contractors or other persons authorised by legislation to work on the fixed wiring of any electrical installation.
- To comply with all safety standards, the device must be used only for the purpose described in this instruction and must be installed in accordance with the wiring rules and regulation in the location where it is installed.
- Lock out and tag the input circuit before accessing the wiring connections.
- The Locking Bar on the grids must be set to the Closed position to ensure that the device cannot be removed during normal operation.
- There are no user serviceable parts inside the device.

Failure to follow these instructions will result in death or serious injury.

⚠ CAUTION

EQUIPMENT DAMAGE HAZARD

- Install the device according to instructions in this document.
- Pay attention to the specifications and wiring diagrams related to the installation.
- Do not use the device for any other purpose than specified in this instruction.
- Dropping the device may damage the internal components. Check that the device operates after being dropped or if physical damage is shown.

Failure to follow these instructions can result in injury or equipment damage.

NOTICE

EQUIPMENT DAMAGE HAZARD (LOAD AND OPERATION)

- Operation of the device at elevated temperatures or voltages outside of specification (240 V a.c. and 25 °C) may cause the over-temperature protection circuitry to operate. Operating with significant overload may activate thermal shut-down. In extreme cases, the thermal fuse may blow and render the device inoperable.
- Reduce the size of the connected load or use a different brand of lamp to prevent recurrence.
- Do not operate the product for prolonged periods in extreme conditions.

Failure to follow these instructions can result in equipment damage.

NOTICE

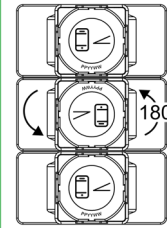
MAXIMUM LOAD RATINGS APPLY

Ensure that the number of low voltage lighting transformers connected to a single device does not exceed the maximum load rating of the device.

Failure to follow these instructions can result in equipment damage.

Installation

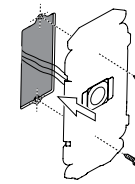
Multi-gang orientation



When installing in a 3-gang plate, the middle module must face the opposite way to the other 2 modules.

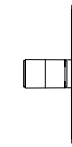
The maximum load rating of each module must be derated (see Derating section).

Mounting the grid

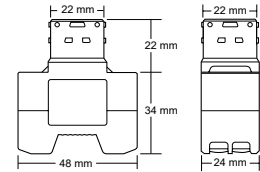


Wall box depth

min. 70 mm



Module dimensions

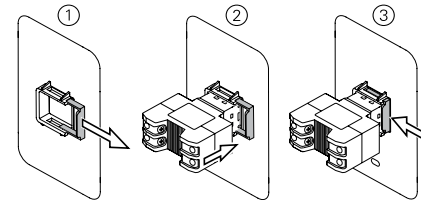


Derating

For multi-gang applications, derate the maximum load rating of each module as shown in the table below. The load figures are based on a nominal voltage of 220-240 V a.c.

Primary modules per plate	Max. load per primary module
1	300 W
2	225 W
3	150 W

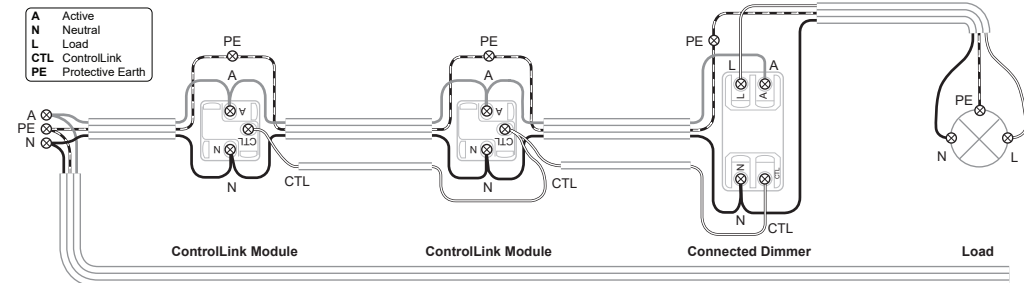
Fitting the module to the grid



Cabling and connections

(Typical 3-way installation using Iconic Connected Module)

Note: ControlLink Modules work with the Connected Dimmer out-of-the-box.



Notes:

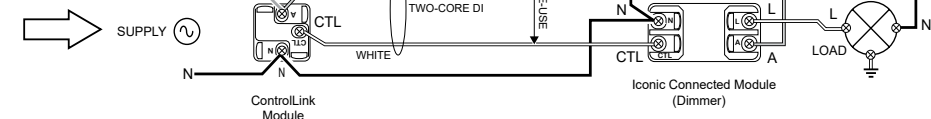
- All Active connections must be on the same phase.
- Up to 5-way dimming (e.g. 1x Dimmer plus up to 4x ControlLink Modules, or up to 3x Dimmers plus 2x ControlLink Modules). In case of multiple DIMmers being installed, each Dimmer must be connected to a separate load.
- Total length of CTL and Active loop: max. 50 m.
- Control and load cables must not be coupled.

Retrofit (2-way installation shown)

BEFORE



AFTER



NNZ58569

Configuring the module (optional)

General information

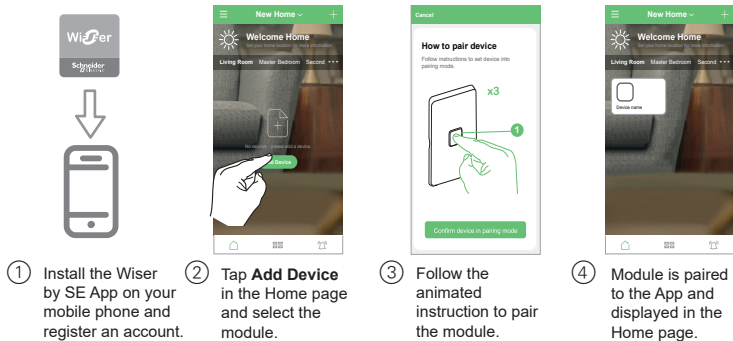
This product operates as a dimmer 'out-of-the-box', with no configuration needed.

The module can optionally be configured as a delay timer, and features a scheduler function. The module LED indicator behaviour and max./min. brightness levels can also be configured, if desired.

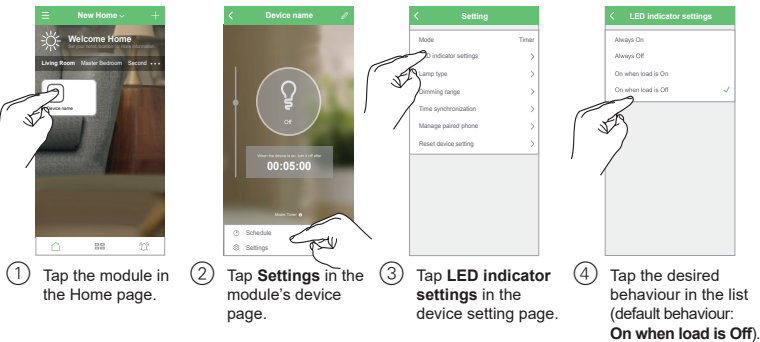
Note: The module must be paired with a mobile phone and the Wisier™ by SE App in order to perform these tasks.

Pairing

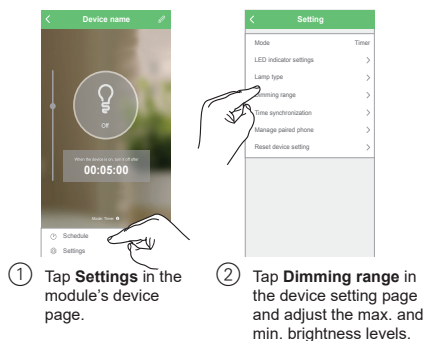
Note: When pairing the module with the Wisier by SE App, be in the same room and within a range of 8 to 10 m of the module. Range can be affected by walls and other structures.



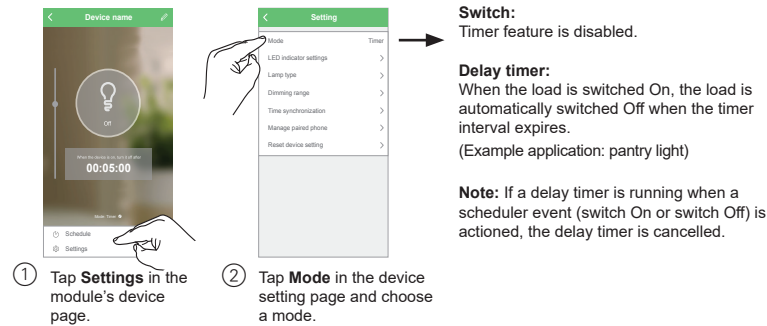
Setting the LED indicator behaviour



Setting the max./min. brightness levels



Setting the mode

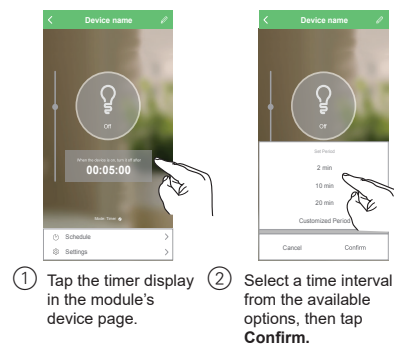


Switch:
Timer feature is disabled.

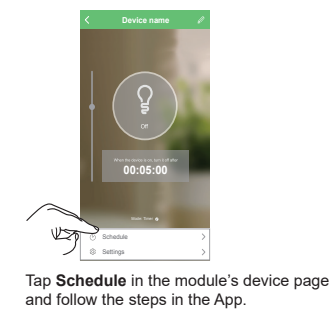
Delay timer:
When the load is switched On, the load is automatically switched Off when the timer interval expires.
(Example application: pantry light)

Note: If a delay timer is running when a scheduler event (switch On or switch Off) is actioned, the delay timer is cancelled.

Setting the timer interval

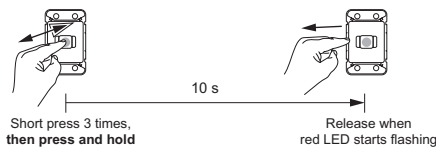


Setting the scheduler



Restoring the device to factory defaults

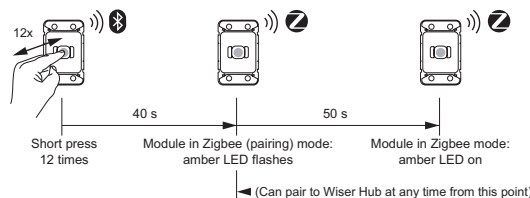
Note: All customised settings and Bluetooth pairing information will be lost. Before restoring, remove the skin in order to see the module LED indicator.



Preparing the device for use with Wisier Hub

This module can be used as a device in a Wisier Hub network. The module must first be changed from BLE mode to Zigbee mode.

IMPORTANT: This operation will result in some data loss and the device needs to be re-configured after the mode has been changed successfully. For further details, please contact customer support.



For information on using the module with the Wisier Hub, refer to the Wisier System User Guide.

Technical data

Note: See product datasheet for full specifications.

Operating voltage	220–240 V a.c., 50 Hz
Load rating	No minimum load required Max. 300 W Refer to Load Compatibility table
Load connection	LED indicator flashes in the event of load disconnection or failure
Dimming range	Min. 0%, Max. 100% (depending on load)
Protection	Over temperature: Yes Short circuit: Yes Overcurrent/thermal fuse: Yes
LED indicator	Yes
Multiway control	Yes, via ControlLink
Multiway limits	Max. 5-way dimming (Max. 3 Iconic Connected Dimmers + remainder ControlLink Modules.)
ControlLink/Active cable limit	Total length of CTL and Active loop: max. 50 m
Supported protocols	BLE (default), Zigbee
Compatible plate ranges	Iconic, Iconic Styl, Iconic Essence, Pro Series
Mounting centres	84 mm pattern plate
Compliance	Safety: AS/NZS 60669.2.1 EMC: AS/NZS 60669.2.1 RF: AS/NZS 4268
Power failure data retention	Internal date/time retained for at least 6 hrs. Settings preserved indefinitely.
Environmental rating	IP20 (designed for indoor use only)
Operating humidity	5%–90% RH, non-condensing
Specifications typical at 25 °C	

Load compatibility

Dimmable LED	150 W
Dimmable compact fluorescent	300 W
240 V incandescent/halogen	
LV halogen with electronic transformer	Not compatible
Non-dimmable LED	
Non-dimmable compact fluorescent	

Disclaimer

Schneider Electric reserves the right to change specifications, modify designs and discontinue items without incurring obligation and whilst every effort is made to ensure that descriptions, specifications and other information in these instructions are correct, no warranty is given in respect thereof and the company shall not be liable for any error therein.

© Schneider Electric 2020

This material is copyright under Australian, New Zealand and international laws. Except as permitted under the relevant law, no part of this work may be reproduced by any process without prior written permission of and acknowledgment to Schneider Electric.

Android is a trademark of Google Inc.

Apple is a trademark of Apple Inc., registered in the U.S. and other countries.

Wisier™ is a trademark and the property of Schneider Electric SE, its subsidiaries and affiliated companies.

Zigbee® is a registered trademark of the Zigbee Alliance.