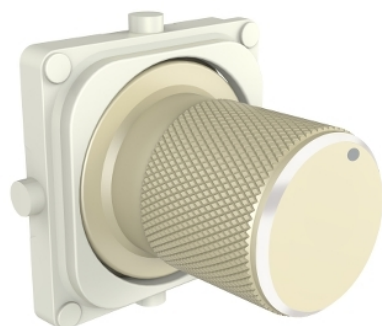


Product data sheet

Characteristics

PDLS300KBC-CE

PDL Iconic Styl - Kit Knob Dimmer



Main

Range	PDL Iconic
Aesthetic name	Iconic Styl
Product or component type	Knob
Colour tint	Crowne (CE)
Type of packing	Polybag
Quantity per set	Set of 5

Complementary

Range compatibility	PDL Iconic knob
Product destination	Cover frame
Fixing mode	Clip-in
Surface finish	Satin
Surface treatment	Metallic
Material	Anodised aluminium: knob
Height	23.0 mm
Width	23.0 mm
Depth	8.5 mm
Net weight	0.03 kg

Environment

Ambient air temperature for storage	0...45 °C
Ambient air temperature for operation	0...45 °C
Relative humidity	10...95 %

Packing Units

Unit Type of Package 1	PCE
Number of Units in Package 1	1
Package 1 Height	1.9 cm
Package 1 Width	2.2 cm
Package 1 Length	2.2 cm
Package 1 Weight	7.06 g

Offer Sustainability

REACH Regulation	REACH Declaration
REACH free of SVHC	Yes
EU RoHS Directive	Pro-active compliance (Product out of EU RoHS legal scope) EU RoHS Declaration
Mercury free	Yes
China RoHS Regulation	China RoHS Declaration
RoHS exemption information	Yes