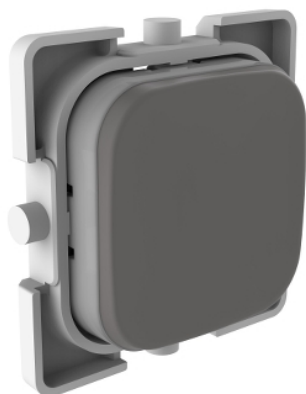


Product data sheet

Characteristics

PDLE300PBC-AG

PDL Iconic - cap for push-button - Iconic Essence



Main

Range of product	PDL Iconic
Aesthetic name	Iconic Essence
Product or component type	Cap
Colour	Ash grey (AG)
Type of packing	Polybag
Quantity per set	Set of 1
Sale per indivisible quantity	1.0

Complementary

Device mounting	Flush
Product destination	Push-button
Fixing mode	Clip-in
Surface finish	Matt
Height	23.0 mm
Width	23.0 mm
Depth	2.0 mm
Net weight	0.01 kg

Environment

Ambient air temperature for operation	0...45 °C
Relative humidity	10...95 %

Packing Units

Unit Type of Package 1	PCE
Number of Units in Package 1	1
Package 1 Height	0.8 cm
Package 1 Width	2.4 cm
Package 1 Length	2.4 cm
Package 1 Weight	2.71 g
Unit Type of Package 2	BAG
Number of Units in Package 2	5
Package 2 Height	0.8 cm
Package 2 Width	9.8 cm
Package 2 Length	19 cm
Package 2 Weight	16.05 g
Unit Type of Package 3	BB1
Number of Units in Package 3	50
Package 3 Height	16.7 cm
Package 3 Width	10.5 cm
Package 3 Length	13 cm
Package 3 Weight	214.5 g

Offer Sustainability

REACH Regulation	REACH Declaration
REACH free of SVHC	Yes
EU RoHS Directive	Compliant EU RoHS Declaration
Mercury free	Yes
China RoHS Regulation	China RoHS Declaration
RoHS exemption information	Yes