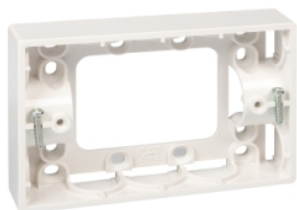


Product data sheet

Characteristics

PDL536WH

Mounting block - 500 Series - Standard Shallow - 25mm depth



Main

Range of product	PDL General Accessories
Product or component type	Mounting plate
Colour tint	White
Quantity per set	Set of 100 Set of 10
Type of packing	Carton

Complementary

Material	PC (polycarbonate)
Surface finish	Glossy
Installation direction	Vertical
Device mounting	Surface
Height	76 mm
Width	119 mm
Depth	25 mm
Fixing center	84 mm
Cable entry	4 x 25 mm knock-out 12 x 20 mm knock-out 12 x 16 mm knock-out 12 TPS knock-out cable entry

Environment

Ambient air temperature for operation	-10...40 °C
---------------------------------------	-------------

Packing Units

Unit Type of Package 1	PCE
Number of Units in Package 1	1
Package 1 Height	2.5 cm
Package 1 Width	7.8 cm
Package 1 Length	12.0 cm
Package 1 Weight	0.049 kg
Unit Type of Package 2	BB1
Number of Units in Package 2	10
Package 2 Height	8.0 cm
Package 2 Width	12.3 cm
Package 2 Length	27.0 cm
Package 2 Weight	0.56 kg
Unit Type of Package 3	CAR
Number of Units in Package 3	100
Package 3 Height	26.0 cm

Package 3 Width	29.0 cm
Package 3 Length	40.5 cm
Package 3 Weight	6.01 kg

Offer Sustainability

Sustainable offer status	Green Premium product
REACH Regulation	REACH Declaration
REACH free of SVHC	Yes
EU RoHS Directive	Compliant EU RoHS Declaration
Toxic heavy metal free	Yes
Mercury free	Yes
RoHS exemption information	Yes
China RoHS Regulation	China RoHS Declaration
Environmental Disclosure	Product Environmental Profile