

**PDL**

NEW PRODUCT DATA AND APPLICATION SHEET

CATALOGUE #

901BK NT Black 10A
 901CL NT Clear 10A
 901WH NT White 10A

BARCODE #

9416175035845
 9416175035852
 9416175035869



901/15CL Clear 15A
 901/15BK Black 15A
 901/15WH White 15A

9416175218521
 9416175218538
 9416175218545

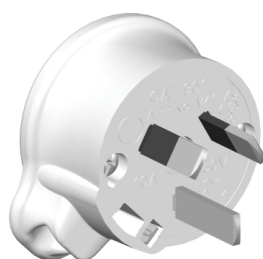
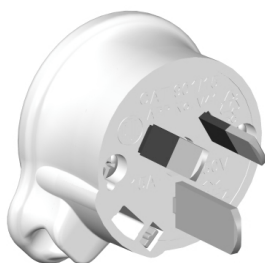
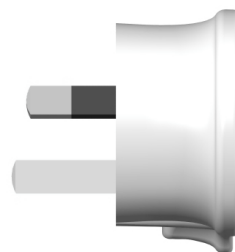
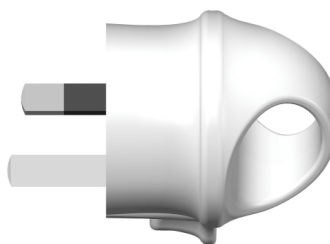


903WH White Hook grip 10A

9416175219870

DESCRIPTION

Side entry 3 pin plugs, standard 10A, 15A, and hook-grip 10A

**901WH****901/15WH****901WH – Side****903WH****903WH – Side**

BOX QUANTITY 20

OUTER QUANTITY 200

FEATURES

Cat 901 available in white, black, and clear.
 Cat 903 available in white only.
 New hook grip version to assist with the ease of insertion and withdrawal during use.
 Sheathed plug pins.
 Impact resistant body for long life.
 New cord clamp design, single screw to tighten.
 Clearly marked terminals.
 New terminal design and layout for ease of termination.
 New terminals incorporate a clamping design for positive and fast termination.
 New serrated terminals provide further assistance for gripping



P D L

NEW PRODUCT DATA AND APPLICATION SHEET

conductors during termination.
New terminal screws, combination No1 phillips/slot screws.
Captivated fixing screws from base to cover.

SPECIFICATIONS

Cat 901 & 903 10A rating at 230-240V ac, 50Hz.
Cat 901/15 15A rating at 230-240V ac, 50Hz.
Terminals accommodate conductors from 0.75mm² to 1.5mm².
Recommended for use with PVC insulated ordinary duty 3 core circular flexible cords.
Recommended stripping length equals 50mm, including 8.5mm bare wires.
Complies with AS/NZS3112 and AS/NZS3100.

APPLICATIONS

Standard 10A side-entry plug use. 15A plug options for specialist appliances and areas of use.
Clear products allow visible check of wires and terminals which is a requirement in certain applications.
Hook grip version to assist with the ease of insertion and withdrawal during use, particularly applicable with our aging society.

COMMENTS

The profile of the plug is such that it fits within shrouding as required
Other items in the 900 Series range include: Cat 905 Back Entry Plug, 10A, 15A, Round Earth, Lock Ring; Cat 925R In-line Connector 10A; Cat 940 Side Entry Tapon Plug, 10A; Cat 927 and 927P Switched Pendant Connector, 10A; Cat 593LRP Flush Socket with Plug; Cat 976P Range Plug 32A.

Features illustrated:

- ☐ new terminals,
- ☐ terminal screws,
- ☐ cord clamp,
- ☐ sheathed plug pins
- ☐ hook grip facility

