

MFR9143800-01



**PLEASE NOTE**

- The installation, use, repair and maintenance of the electrical equipment must be carried out by qualified personnel only.
- All applicable local, regional and national regulations must be complied with during the installation and use of this device.
- This device should not be installed if, when unpacking it, you observe that it is damaged.
- Schneider Electric cannot be held responsible in the event of noncompliance with the instructions in this document and in the documents to which it refers.
- The service instruction must be observed throughout the product life time.

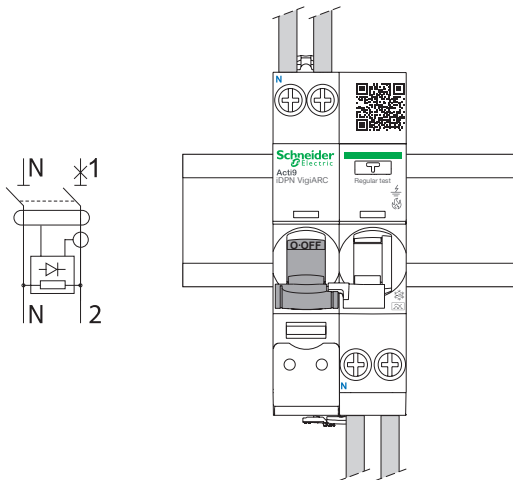
## 1 Installation - wiring

**⚠ ⚠ DANGER**

**HAZARD OF ELECTRIC SHOCK, EXPLOSION OR ARC FLASH**

- Turn off all power supplying this device before working on it.
  - Use a voltage tester with a suitable rated voltage, in order to check that all active conductors aren't energized.
- Failure to follow these instructions will result in death or serious injury.**

en There is no insulation between the phase/Line and the neutral bottom terminals whatever the position of the toggles.



14 mm	1...16 mm <sup>2</sup>	1...10 mm <sup>2</sup>

2 N.m	5.5 mm	PZ2

## 2 Dielectric test

### NOTICE

#### RISK OF DAMAGE TO THE iDPN • VigiARC DEVICE

Disconnect all input and output wires to the iDPN • VigiARC device before performing an insulation resistance test (dielectric test).  
Failure to follow these instructions can result in equipment damage.

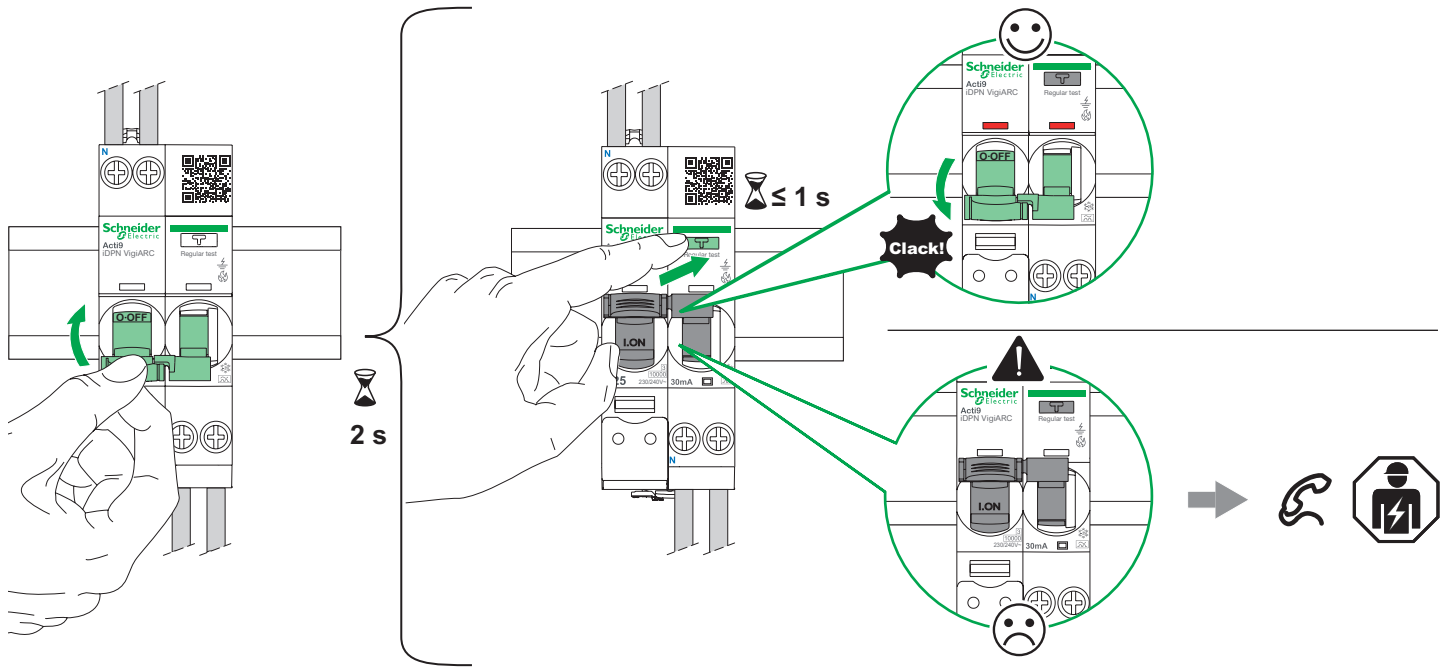
## 3 Testing

### ⚠ WARNING

#### FIRE HAZARD

Run a self diagnostic test of iDPN • VigiARC after installing it, and then at regular intervals by pressing the Test button (marked T) for 1 second. (see drawing below).  
Failure to follow these instructions can result in death, serious injury, or equipment damage.

**en** After turning the iDPN • VigiARC on, wait 2 seconds before pressing the test button.



# 4 Diagnosis

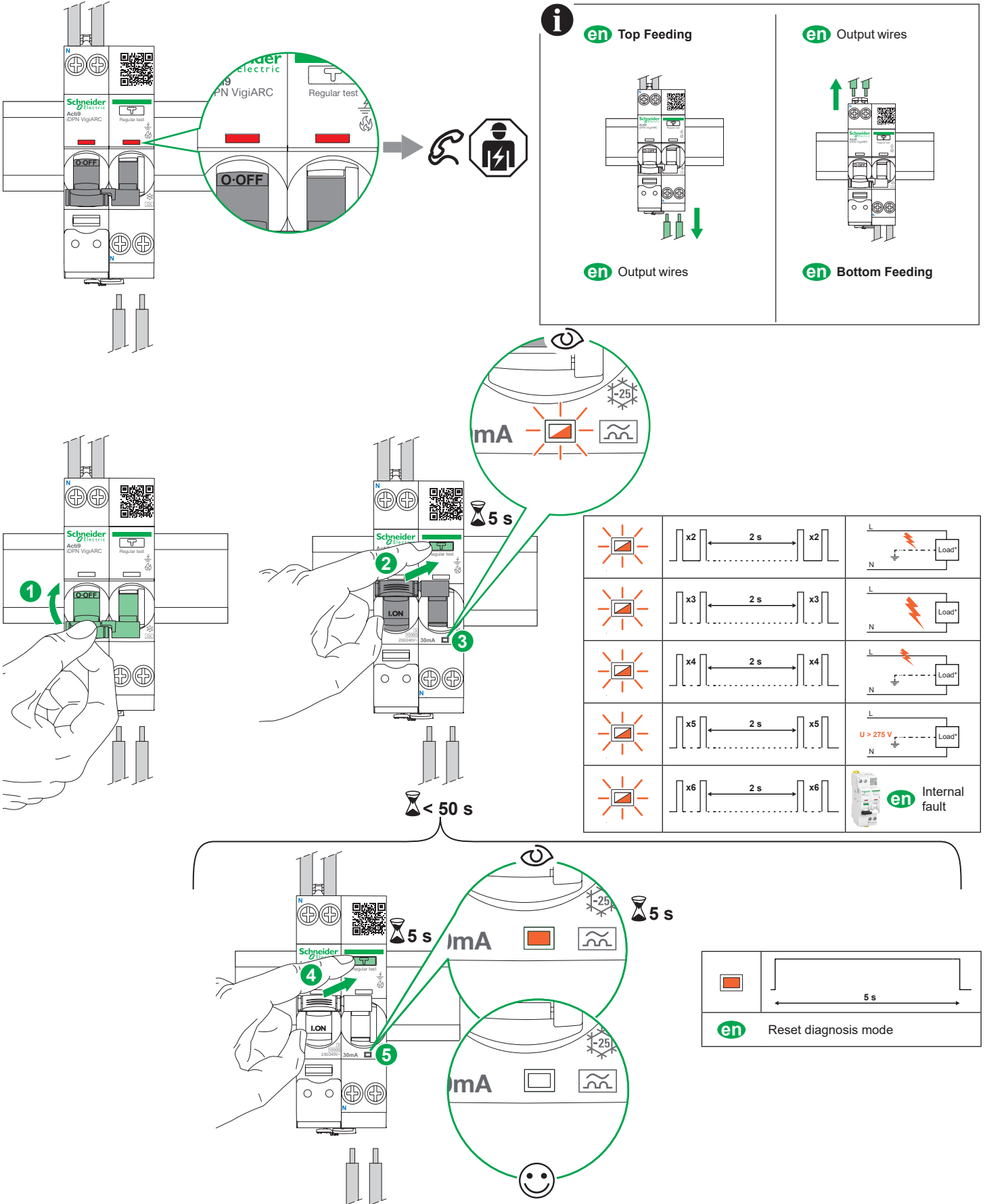
**⚠ ⚠ DANGER**

**HAZARD OF ELECTRIC SHOCK, EXPLOSION OR ARC FLASH**

Disconnect all output wires prior to the diagnostic steps.

**Failure to follow these instructions will result in death or serious injury.**

- en** After 60 seconds, the blinking sequence stops and the LED is continuously switched OFF. Diagnosis operations are similar whether in top feed or bottom feed.



# 5 Maintenance

