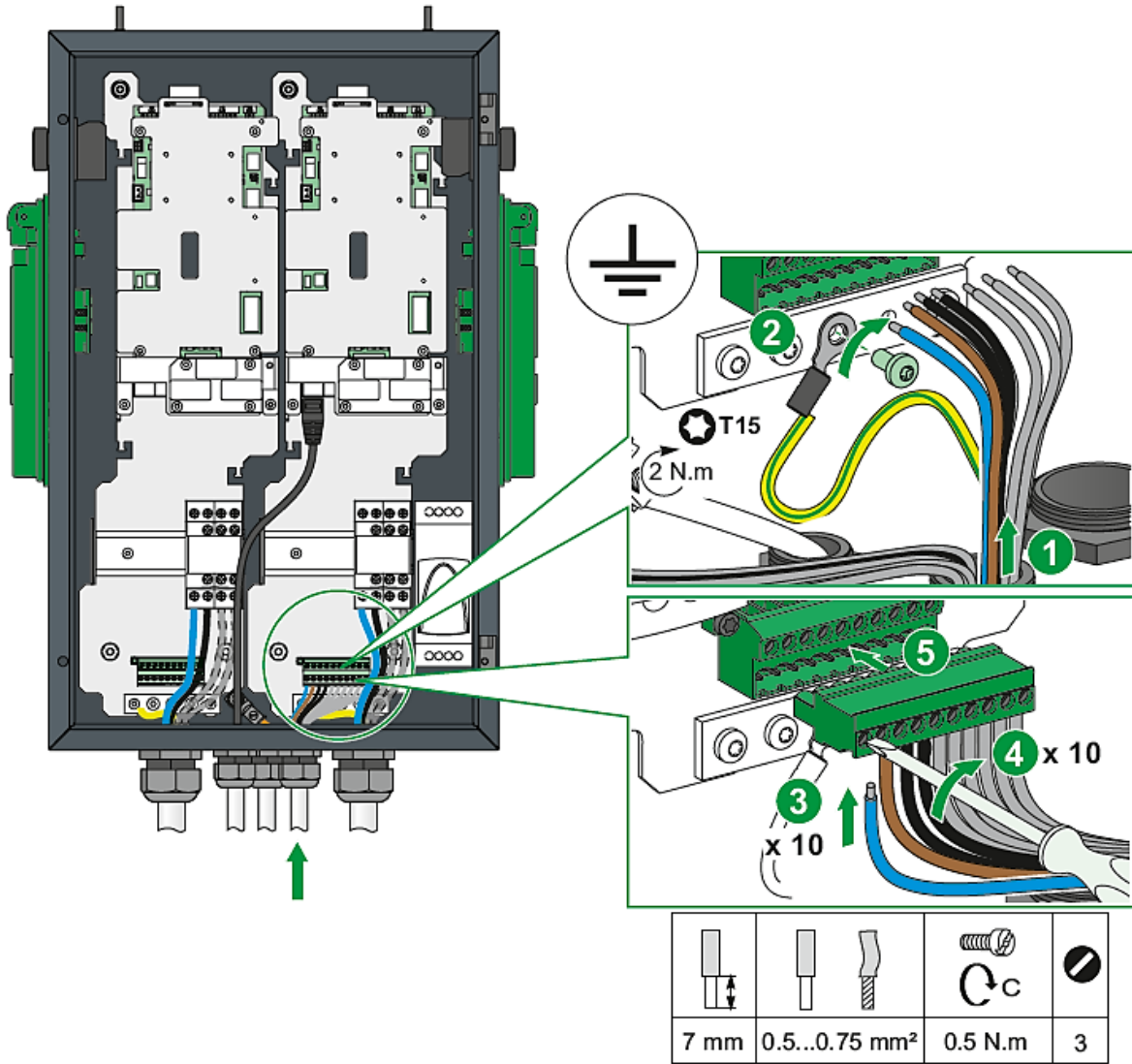


EVlink Parking range



A	B	C	D
N	L	E1	E2
0V	In-1	In-2	0V
D0/-	D1/+		

- A 220-240V auxiliary power supply
- B Power tripping auxiliary
- C Functions
 - 0V: Isolated common 0V
 - In-1: Circuit breaker status or load shedding
 - In-2: Conditional outgoing line
- D RS485 Modbus (energy meter)

Optional – use only if required

EVlink Parking

Floor-standing

Wall-mounted

