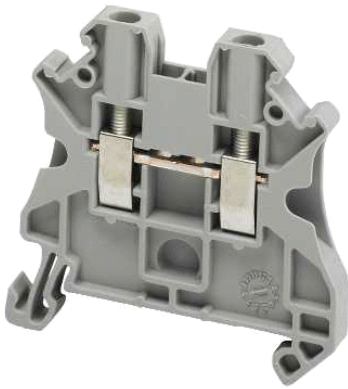


NSYTRV22

Lineryy passthrough terminal block - 2.5mm² 24A
single-level 1x1 screw - grey



Main

Range	Lineryy
Product name	Lineryy TR
Product or component type	Terminal block
Device short name	TRV
Accessory / separate part category	Connection accessory
Terminal block type	Passthrough
Terminal block level	1
Mounting mode	Clip-on
Nominal cross section	2.5 mm ²
Length	47.7 mm
Colour	Grey
Quantity per set	Set of 50

Complementary

Width	5.2 mm
Height	47.5 mm
Connections - terminals	1 x screw terminal : upstream (M3) 1 x screw terminal : downstream (M3)
Number of terminals	2
Connection position	Sideways
Number of measurement input	2
Cable cross section	0.2...2.5 mm ² , flexible with cable end 0.14...4 mm ² , solid with cable end 0.14...4 mm ² , solid without cable end 0.14...4 mm ² , flexible without cable end
Tightening torque	0.5...0.6 N.m
Wire stripping length	9 mm
Tool type	Connection : screwdriver Disconnection : screwdriver
[Ue] rated operational voltage	1000 V conforming to EN/IEC 60947-7-1 600 V CSA 690 V conforming to ATEX Exe II Ex II 2 GD 600 V cURus
[Ie] rated operational current	22 A conforming to ATEX Exe II Ex II 2 GD 24 A conforming to EN/IEC 60947-7-1 20 A CSA 20 A cURus
Material	Polyamide 6/6 (insulating case) Copper alloy (connector and screw) Copper alloy (commoning link) Chromium-nickel steel (spring)
Dielectric loss	0.01 at 1 MHz conforming to IEC 60250 0.01 at 1 MHz conforming to VDE 0303-T4
Dielectric constant	3.7 at 1 MHz
Resistivity	10000 MΩ.m conforming to IEC 60093 10000 MΩ.m conforming to VDE 0303-T30
Surface resistance	1000 GΩ conforming to IEC 60093 1000 GΩ conforming to VDE 0303-T30
Creep resistance	500 CTI (> 400 kB) conforming to IEC 60093 500 CTI (> 400 kB) conforming to VDE 0303-T30
Flame retardance	V0, thickness 0.8 mm conforming to UL 94
Product weight	8.2 g

Range compatibility	Prisma - G Prisma - P Pragma Prisma - PH Prisma - Pack Spacial Kaedra TeSys
Product compatibility	Spacial enclosures

Environment

product certifications	ATEX CSA CURus DNV GL LR VDE IEC-Ex EAC
dielectric strength	1000 V conforming to IEC 60243-1
ambient air temperature for operation	-40...130 °C conforming to IEC 60216-1 -40...130 °C conforming to VDE 0304-T21

Offer Sustainability

Sustainable offer status	Not Green Premium product
RoHS (date code: YYWW)	Compliant - since 1052 - Schneider Electric declaration of conformity
REACH	Reference not containing SVHC above the threshold
Product end of life instructions	Need no specific recycling operations