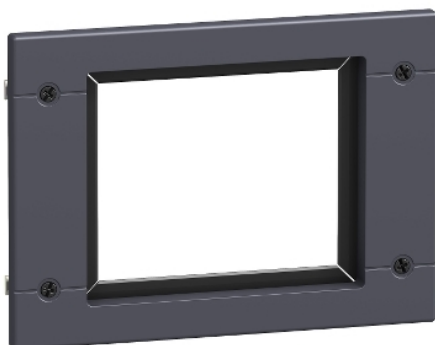


Product data sheet

Characteristics

LV432558

escutcheon for all control types, fixed ComPact NSX400/630, IP40



Main

Product or component type	Escutcheon
Accessory / separate part category	Insulation accessory
Range compatibility	ComPact NSX400 ComPact NSX630 Compact NSX400 DC Compact NSX630 DC EasyPact CVS400 EasyPact CVS630 PowerPact L
Control type	Rotary handle Toggle Motor mechanism

Complementary

Mounting mode	Fixed
---------------	-------

Environment

IP degree of protection	IP40 conforming to IEC 60529
-------------------------	------------------------------

Packing Units

Unit Type of Package 1	PCE
Number of Units in Package 1	1
Package 1 Weight	140 g
Package 1 Height	1 cm
Package 1 width	17 cm
Package 1 Length	19 cm
Unit Type of Package 2	S03
Number of Units in Package 2	20
Package 2 Weight	3.247 kg
Package 2 Height	30 cm
Package 2 width	30 cm
Package 2 Length	40 cm

Offer Sustainability

Sustainable offer status	Green Premium product
REACH Regulation	REACH Declaration
REACH free of SVHC	Yes
EU RoHS Directive	Pro-active compliance (Product out of EU RoHS legal scope) EU RoHS Declaration
Toxic heavy metal free	Yes
Mercury free	Yes
RoHS exemption information	Yes
China RoHS Regulation	China RoHS Declaration

Environmental Disclosure	Product Environmental Profile
Circularity Profile	End Of Life Information

Contractual warranty

Warranty	18 months
----------	-----------
