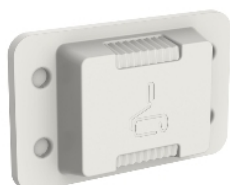


Product data sheet

Characteristics

PDL300APP/100

Iconic, protective paint cover, for 120 x 78mm plates



Main

Range	PDL Iconic
Range of product	Iconic
Product or component type	Protective cover
Surface finish	Painted
Colour tint	Translucent Green

Packing Units

Unit Type of Package 1	PCE
Number of Units in Package 1	1
Package 1 Weight	10 g
Package 1 Height	0.4 cm
Package 1 width	2.5 cm
Package 1 Length	6.7 cm

Offer Sustainability

Sustainable offer status	Green Premium product
REACH Regulation	REACH Declaration
EU RoHS Directive	Compliant EU RoHS Declaration
Mercury free	Yes
RoHS exemption information	Yes
China RoHS Regulation	China RoHS Declaration
Environmental Disclosure	Product Environmental Profile