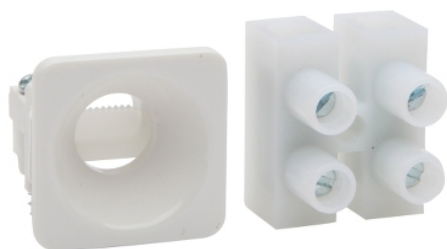


Product data sheet

Characteristics

PDL651M2WH

Permanent Connection Module (PCU) 600 Series - 240 V - 16 A - White



Main

Range of product	600 Series
Product or component type	Socket

Complementary

Material	PC (polycarbonate)
Colour tint	White
Surface finish	Gloss
Installation direction	Vertical
Length	23 mm
Width	23 mm
[Ue] rated operational voltage	230/240 V
Network frequency	50 Hz
Motor M-rating AS3133	M60
Network number of phases	1 phase
Number of gangs	1 gang
Number of poles	1
Mounting mode	Front
IP degree of protection	IP56
Ambient air temperature for operation	-10...40 °C
Connections - terminals	Screw terminal
Quantity per set	Set of 20
Type of packing	Carton

Packing Units

Unit Type of Package 1	PCE
Number of Units in Package 1	1
Package 1 Weight	16.3 g
Package 1 Height	20 mm
Package 1 width	70 mm
Package 1 Length	80 mm

The information provided in this documentation contains general descriptions and/or technical characteristics of the performance of the products contained herein. This documentation is not intended as a substitute for and is not to be used for determining suitability or reliability of these products for specific user applications. It is the duty of any such user or integrator to perform the appropriate and complete risk analysis, evaluation and testing of the products with respect to the relevant specific application or use thereof. Neither Schneider Electric Industries SAS nor any of its affiliates or subsidiaries shall be responsible or liable for misuse of the information contained herein.

Offer Sustainability

Sustainable offer status	Green Premium product
REACH Regulation	REACH Declaration
EU RoHS Directive	Compliant EU RoHS Declaration
Mercury free	Yes
RoHS exemption information	Yes
China RoHS Regulation	China RoHS Declaration
Environmental Disclosure	Product Environmental Profile