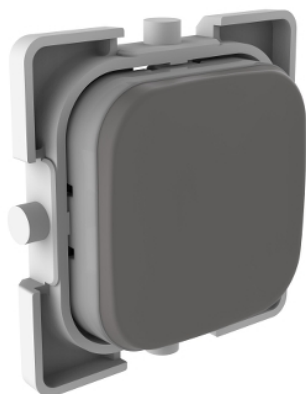


## Product data sheet

### Characteristics

# PDLE300PBC-AG

PDL Iconic - cap for push-button - Iconic  
Essence - ash grey



#### Main

Range of product	PDL Iconic
Aesthetic name	Iconic Essence
Product or component type	Cap
Colour	Ash grey (AG)
Type of packing	Polybag
Quantity per set	Set of 1
Sale per indivisible quantity	1.0

#### Complementary

Device mounting	Flush
Product destination	Push-button
Fixing mode	Clip-in
Surface finish	Matt
Height	23.0 mm
Width	23.0 mm
Depth	2.0 mm
Product weight	0.01 kg

#### Environment

Ambient air temperature for operation	0...45 °C
Relative humidity	10...95 %

#### Packing Units

Unit Type of Package 1	PCE
Number of Units in Package 1	1
Package 1 Weight	2.71 g
Package 1 Height	8 mm
Package 1 width	24 mm
Package 1 Length	24 mm

#### Offer Sustainability

EU RoHS Directive	Under investigation
-------------------	---------------------

The information provided in this documentation contains general descriptions and/or technical characteristics of the performance of the products contained herein. This documentation is not intended as a substitute for and is not to be used for determining suitability or reliability of these products for specific user applications. It is the duty of any such user or integrator to perform the appropriate and complete risk analysis, evaluation and testing of the products with respect to the relevant specific application or use thereof. Neither Schneider Electric Industries SAS nor any of its affiliates or subsidiaries shall be responsible or liable for misuse of the information contained herein.