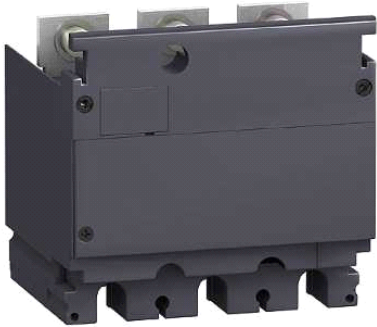


## LV431569

CT module and voltage output - 250 A - 3 poles - for NSX100...250



### Main

Range of product	NSX100...250
Range	Compact
Device short name	CT module and voltage output
Product or component type	Current transformer
Device application	Control
Range compatibility	Compact - Compact NSX circuit breaker
Poles description	3P
Network type	AC
[In] rated current	250 A ( 1.1 VA )

### Complementary

[Ue] rated operational voltage	530 V
Network frequency	50/60 Hz
Current transformer ratio	250/5 A
Auxiliary connection terminal	Cable connector 2.5 mm <sup>2</sup>

### Environment

electrical shock protection class	Class II
IP degree of protection	IP40 conforming to IEC 60529
IK degree of protection	IK04 conforming to IEC 62262

### Offer Sustainability

Sustainable offer status	Not Green Premium product
RoHS (date code: YYWW)	Compliant - since 0818 - Schneider Electric declaration of conformity
REACH	Reference not containing SVHC above the threshold

The information provided in this documentation contains general descriptions and/or technical characteristics of the products contained herein. This documentation is not intended as a substitute for and is not to be used for determining suitability or reliability of these products for specific user applications. It is the duty of any such user or integrator to perform the appropriate and complete risk analysis, evaluation and testing of the products with respect to the relevant specific application or use thereof. Neither Schneider Electric Industries SAS nor any of its affiliates or subsidiaries shall be responsible or liable for misuse of the information contained herein.