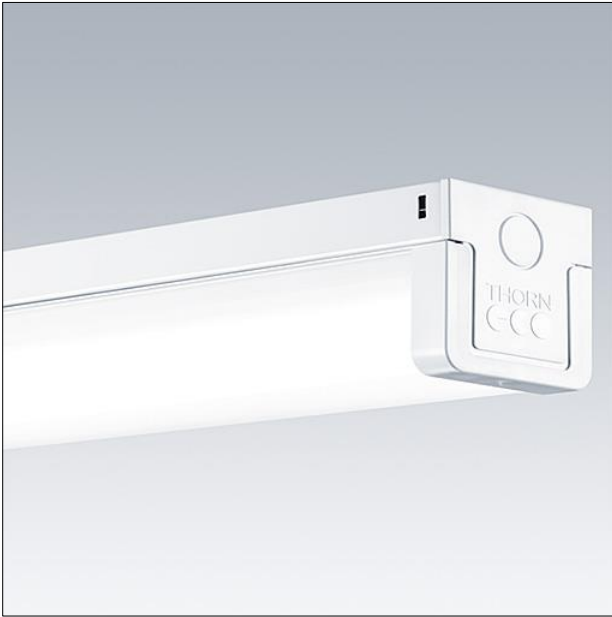


Surface mounted LED luminaire

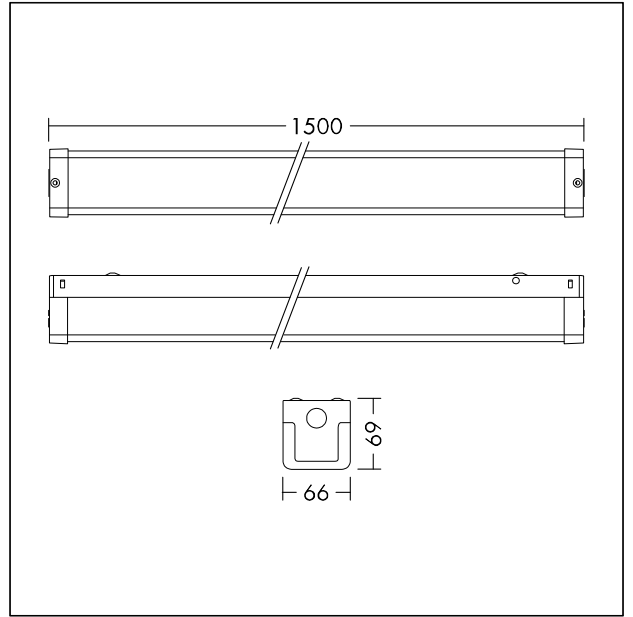
Batten with reliable integrated LED technology, ensuring maintenance-free installation and a long lifetime. High quality opal diffuser ensures homogeneous illumination. High efficacy of 100 lm/W, save up to 60% energy compared with T5 fluorescent battens. Direct replacement for conventional battens in terms of light performance and length.

Materials:

- Body: Stainless steel
- Diffuser: PC, opal white
- End caps: PC, white
- Complete with 4000K LED, 6000lm. Class I electrical, IP20, IK08
- Weight: 1,6 kg



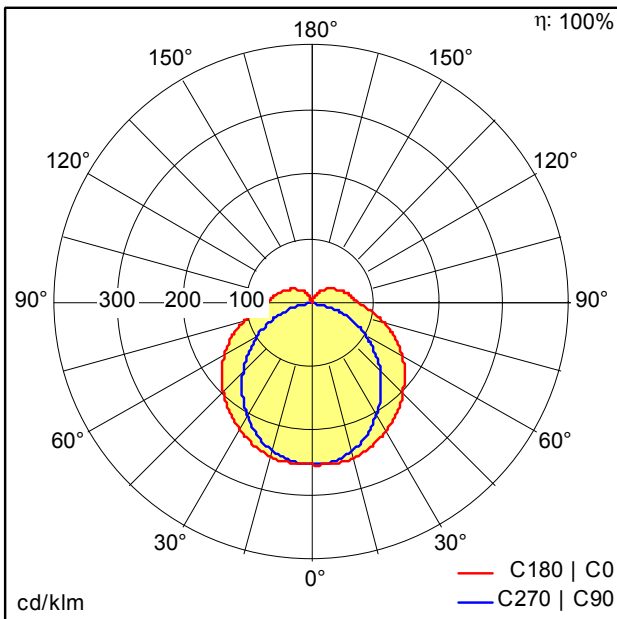
TE\_BARRY\_F\_1500\_PERSP.jpg



TE\_BARRY\_M\_1500.wmf

Light Distribution

STD - standard



TE\_BARRY\_LED\_1500\_6000\_840.idt

- Light Source: LED
- Luminaire luminous flux\*: 6000 lm
- Luminaire efficacy\*: 100 lm/W
- Colour Rendering Index min.: 80
- Correlated colour temperature\*: 4000 Kelvin
- Chromaticity tolerance (initial MacAdam)\*: 5
- Rated median useful life\*: 50000h L70 at 25°C
- Ballast: 1x LED\_Con
- Luminaire input power\*: 60 W Lambda = 0.9