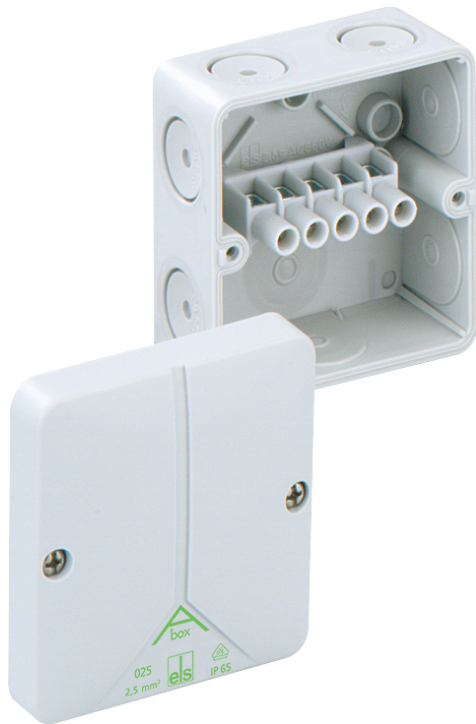


Junction box

## Abox 025-2,5<sup>2</sup>



### Abox 025-2,5<sup>2</sup>

Junction box

CUSTOMIZABLE

Productnumber: 80240701

Dimensions: 80 x 80 x 52 mm

Junction box, with protection class IP65, Nominal cross-section 2.5 mm<sup>2</sup>, Ui=690V AC, certified according to VDE (DIN EN 60670-1/-22 (VDE 0606-1/-22)), Self-sealing, flexible insertion membranes, M20, Sealing area 2 - 16 mm, (1 Rear, 7 Side), Internal fastening points, for standard indoor installations

**grey, with screw terminal, 5-pole - 2.5 mm<sup>2</sup> (4 x 1.5<sup>2</sup> / 4 x 2.5<sup>2</sup>)**



To industrial product:  
<https://www.spelsberg.com/p/49040201>

## Technical Data

### electrical characteristics

Rated operating voltage AC:	690 V
Rated insulation voltage AC:	690 V
Max. conductor cross section:	2,5 mm <sup>2</sup>
Protection class:	II
Type of protection:	IP65
UL Type Rating:	not specified

### Colours

Base unit colour:	grey
Cover colour:	grey

### Dimensions

Width:	80 mm
Length:	80 mm
Height:	52 mm

### Material characteristics

suitable for exterior use:	no
Industry quality:	no
Halogen free:	yes
Flammability class according with UL94:	HB
Glow-wire flammability according to EN 60695-2-11:	650 °C

### mechanical properties

for sealing range max:	16 mm
Type of fastening:	Wall/ceiling mounting
Impact strength:	IK07
Sealable:	yes
Cover screw torque:	1 Nm

### mechanical properties

for sealing range min:	2 mm
------------------------	------

### Ambient conditions

max. relative humidity 25°C:	95 %
max. relative humidity 40°C:	50 %
Min. ambient temperature:	-25 °C
Max. ambient temperature:	40 °C
24h ambient temperature:	35 °C
Set-up location:	Indoors

### Material

Base unit material:	Polystyrene
Cover material:	Polystyrene
Cover screw material:	Stainless steel V2A

### Certificates

Test mark:	VDE (DIN EN 60670-1/-22 (VDE 0606-1/-22))
------------	---

## Accessories

[84000401 - Abox 025/040 KLS-2,5<sup>2</sup>/4<sup>2</sup> - Terminal block](#)

[19202001 - KS M20 - Combi set](#)

[20342001 - WST M20 - Twist plug](#)

[21342001 - WNI M20 - Twist nipple](#)

[21642001 - SNI M20 - Stepped nipple](#)

[22742001 - KVR M20-MGM - Cable gland](#)

[22742101 - KVR M20-GDB/MGM - Cable gland](#)

[23042001 - AST M20 - Attachment bushes](#)

[23142001 - VST M20 - Sealing plugs](#)

[26012001 - DMS M20/w - Double-membrane seals](#)

[26042001 - DMS M20 - Double-membrane seals](#)

[26202001 - BST M20/sw - Ventilation seal](#)

[26242001 - BST M20 - Ventilation seal](#)

[28842001 - RST M20 - Conduit connector](#)

[89001001 - Abox PST - Sealing kit](#)

## Cable gland

